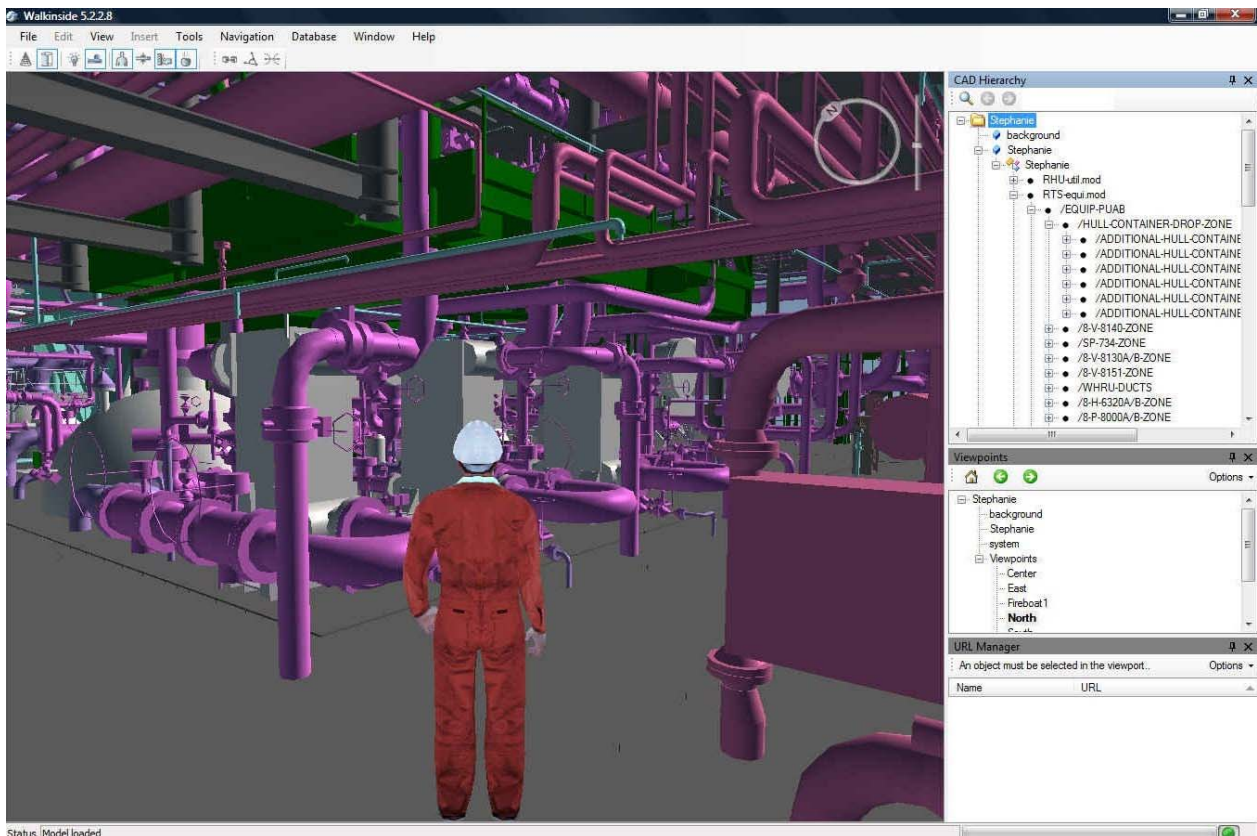




VRcontext

Walkinside 5.3 Product Overview





Walkinside Real-Time Viewer

Walkinside Viewer Toolbox	<p>Immersive walkthrough in massive 3D models.</p> <p>Collision detection and Gravity enable the user to walk around in massive 3D models and see the 3D environment through the eyes of a virtual visitor.</p> <p>The easy-to-use game-like navigation makes sure that novice users without any previous CAD experience can immediately step inside the Virtual Reality model.</p> <p>Walkinside Viewer Toolbox allows adding View Points, Redlining and URL links to existing Web Pages and external documents. The output is displayed in a new browser window.</p>
Walkinside Engineering Database Query	<p>The Walkinside Viewer uses the CAD hierarchy of the original CAD files as primary functional tree in the 3D Virtual Reality Models.</p> <p>Walkinside Engineering Database query provides efficient navigation inside 3D models using the CAD hierarchy.</p> <p>Walkinside Engineering Database Query allows to visualize Engineering Attributes stored in the CAD system and to make queries on the Engineering Attributes.</p> <p>Prerequisite : Walkinside Viewer Toolbox</p>
Walkinside Project Review	<p>Walkinside Project Review enables the import, move and positioning of already converted sub-models in an assembly of Walkinside projects. It also allows accurate CAD based measurement in the 3D model.</p> <p>To better focus on components, subsystems or plant units, Walkinside Project Review allows to hide objects, highlight them or use clipping planes.</p> <p>In addition this module allows the creation of groups of objects to hide and/or show all them together.</p> <p>Prerequisite : Walkinside Viewer Toolbox</p>



Walkinside Real-Time Viewer (Cont'd)

Walkinside Accessibility Review	<p>Walkinside Accessibility Review enables walkthroughs with a walking avatar. Designers can do their Accessibility and Operability Review efficiently, saving costly modifications during the construction phase.</p> <p>During project, marketing and sales presentations the walking avatar guarantees that the presenter will capture the attention of the audience.</p> <p>Prerequisite : Walkinside Viewer Toolbox</p>
Walkinside 3D Stereo	<p>The Walkinside 3D Stereo enables multi screen visualization and 3D stereo allowing Walkinside to run in different 3D environments such as 3D stereoscopic CAVE or other 3D reality centers.</p> <p>Prerequisite : Walkinside Viewer Toolbox</p>



Walkinside Model Creation

Walkinside Core Builder	<p>Walkinside Core Builder converts 3D CAD files to Walkinside Virtual Reality Models that can be opened with Walkinside Viewer Toolbox and Walkinside PreView.</p> <p>Walkinside Core Builder supports AutoCAD, MicroStation (with textures) 3D Studio and 3ds Max (with textures) files.</p>
Walkinside PDMS Builder	<p>Walkinside PDMS Builder converts PDMS Geometry and Engineering Database attributes to Walkinside Virtual Reality Models. The Walkinside standalone PDMS Builder enables the conversion of multi-model projects.</p> <p>Prerequisite : Walkinside Core Builder</p>
Walkinside PDS Builder	<p>Walkinside PDS Builder converts PDS Geometry and Engineering Database attributes to Walkinside Virtual Reality Models. Walkinside PDS can be launched in MicroStation directly or in batch mode.</p> <p>Prerequisite : Walkinside Core Builder</p>
Walkinside XMpLant Builder	<p>Walkinside XMpLant Builder converts XMpLant CAD files to Walkinside Virtual Reality Models that can be opened with Walkinside Viewer Toolbox and Walkinside PreView.</p> <p>Prerequisite : Walkinside Core Builder</p>
Walkinside SolidWorks Builder	<p>Walkinside SolidWorks plug-in Builder converts SolidWorks CAD files to Walkinside Virtual Reality Models that can be opened with Walkinside Viewer Toolbox and Walkinside PreView. It supports textures.</p> <p>Prerequisite : Walkinside Core Builder</p>



Integration with External Applications

Walkinside Near Static Toolkit	<p>Walkinside Near Static Toolkit enables smart URL links to external applications. It creates automatic links by parametrically referencing Engineering Attributes stored in the Walkinside Virtual Reality models.</p> <p>Alternatively, external applications can reference 3D objects in Walkinside (when the HTTP Server is enabled).</p> <p>Prerequisite : Walkinside Engineering Database Query</p>
Walkinside CFD Simulation	<p>Walkinside CFD Simulation allows the visualization of smoke and gas propagations using already computed FLACS® CFD results.</p> <p>This module enables multiple sources. Through various smoke parameters, it allows the creation of realistic environments for safety reviews.</p> <p>Prerequisite : Walkinside Viewer Toolbox</p>
Walkinside LFM Server Interface	<p>The LFM Server Interface enables the import of massive volumes of laser capture data from LFM Server™ to Walkinside for visualization in a complex 3D VR environment. When merged with original CAD data, it allows visual clash checks between planned construction and existing plant structures.</p> <p>Prerequisite : Walkinside Viewer Toolbox</p>



3D Collaboration

<p>Walkinside PreViewer</p>	<p>Walkinside PreViewer is a freely available Collaboration Viewer.</p> <p>Walkinside PreViewer enables basic Collaboration between Engineering companies, Sub-Contractors and Owner/Operators. Walkinside PreViewer allows sharing 3D Virtual Reality Models of any size and gives access to Viewpoints, Redlining and comments.</p>
------------------------------------	---

Important Notice: Walkinside 5.3 supports 64 bit Operating Systems.