



VRcontext

# FLEXnet License Installation

**March 2008**

VRcontext s.a. / n.v.

Avenue Tedesco 7 – 1160 Brussels – Belgium

[p] +32 2 663 96 00 – [f] +32 2 644 36 96

[e] [info@vrcontext.com](mailto:info@vrcontext.com) – [w] [www.vrcontext.com](http://www.vrcontext.com)

Ref : 700.025

© 2008 VRcontext s.a./n.v. All rights reserved



# VRcontext

## 1. License types

VRcontext will deliver 2 different types of licenses, *Nodelocked* Licenses and *Floating* Licenses. As shown in the picture, depending on the license type the administrator will have to take care of different aspects.

The first important new concept is the VRhostID. This is a unique identifier for the computer where the license will be running.

License type	VRhostID required	Activate License
Customer Nodelocked	Yes	Copy in the Walkinside directory
Customer floating	Yes	Start FLEXnet License

- Nodelocked licenses should be copied on the Walkinside\VRLicense directory:  
C:\Program Files\VRcontext\Walkinside 5.1\VRLicense by default.
- For Floating Licenses, FLEXnet License Server is required to be running on a server and Walkinside on the client.

## 2. Getting the VRhostID

To get the VRhostID of a computer the user has to follow the next steps:

- Step 1. Download [GetVRHostID.exe](#)
- Step 2. Run GetVRHostID.exe, that will create a file 'hostid.txt' in the same directory
- Step 3. Send hostid.txt to VRcontext

Hostid.txt example:

HOSTID=COMPOSITE=**B8A302DEF943**

VRhostID used to create license file

HOSTNAME=**LatitudeC840-1**

Computer name, used to find license server for floating licenses

IP\_address= 192.168.123.26

## 3. Licenses Files

The Nodelocked license file will look like:

```

PACKAGE WALKINSIDEPREVIEWPACKAGE vrcontxt 2.1 COMPONENTS="VIEWER \
FIRSTPERSONMODE ALTIMETER COMPASS CAMERA PTTOPTDISTANCE \
PTTOPTANGLE SWITCHONOFFOCEAN VIEWPOINTS CADHIERARCHY REDLINING \
CHECKPWANDEXPIRATIONDATE" OPTIONS=SUITE SIGN="0324 762C 3A16 \
32DD 55CB 8B45 5405 D352 1DA5 2976 1100 5EF7 C8EE 5F4A BD23 \
9E4F EC94 B621 FB15 958E 8F10"
FEATURE WALKINSIDEPREVIEWPACKAGE vrcontxt 2.1 30-apr-2007 uncounted \
VENDOR_STRING="VRcontext internal" HOSTID=COMPOSITE=C65866B848E9 \
SUITE_DUP_GROUP=U user_info=Andoni SN=48C9F8DFE2D1D264 \
SIGN="0003 8C06 9BA4 9719 E396 588C 2DA1 478C F498 7A9F 7A00 \
87C2 AAC8 0780 E8FB 418C BCB6 8B19 01CA 76E8 E3C6"

```

The Floating license file will look like:



# VRcontext

```

SERVER aita2 COMPOSITE=C65866B848E9 ANY
VENDOR vrcontxt
PACKAGE WALKINSIDEPREVIEWPACKAGE vrcontxt 2.1 COMPONENTS="VIEWER \
FIRSTPERSONMODE ALTIMETER COMPASS CAMERA PTTOPTDISTANCE \
PTTOPTANGLE SWITCHONOFFOCEAN VIEWPOINTS CADHIERARCHY REDLINING \
CHECKPWANEXPIRATIONDATE" OPTIONS=SUITE SIGN="02DE C658 3C2E \
A544 E422 F4D2 AC32 130B 6B4C FE4C FF00 B57B E08C C688 C32F \
3A1B 478B 2EE7 0AD4 536E 56F9"
FEATURE WALKINSIDEPREVIEWPACKAGE vrcontxt 2.1 30-apr-2007 1 \
VENDOR_STRING=test DUP_GROUP=U SUITE_DUP_GROUP=U \
user_info=test BORROW=333 SN=48C9F8DFE2D1D264 SIGN="0291 1400 \
530B FBAE 7455 6283 2170 42F2 50E4 3718 0A00 ACD4 0D24 8296 \
B011 4D97 6705 E75F 9238 70FE 5784"

```

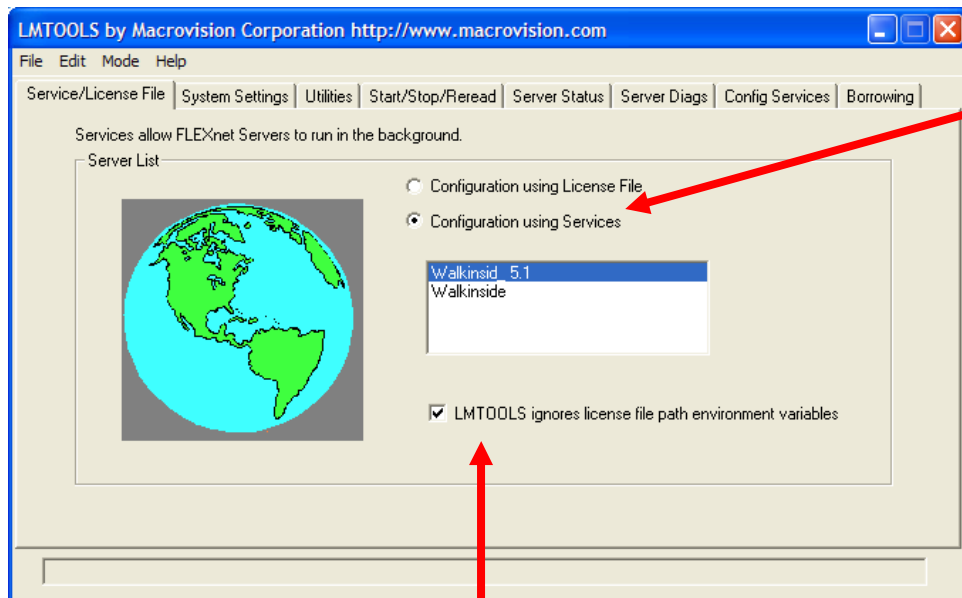
NOTE: The user can change two fields in the FLEXnet Floating license file:  
The hostname and port number (indicated in blue)

## 4. Installing the License Server

4.1. To install the license server follow the next steps:

- Step 1:** Install FLEXnet during Walkinside installation procedure: This creates a directory 'Flexlm'
- Step 2:** Launch the FLEXnet license server.
- Step 3:** Copy FLEXnet license in Walkinside\VRLicense folder on the client machines and in the Flexlm folder in the server machine.

4.2. License Server Configuration (Server Machine)



- Step 1:** Run "C: Program Files \VRcontext\Flexlm\ Lmtools.exe"
- Step 2:** Select 'Configuration using Services'
- Step 3:** Select 'Config Services' Tab page
- Step 4:** Enter service name e.g. 'Walkinside\_5.1'
- Step 5:** Select lmgrd.exe
- Step 6:** Select license file
- Step 7:** Select log file

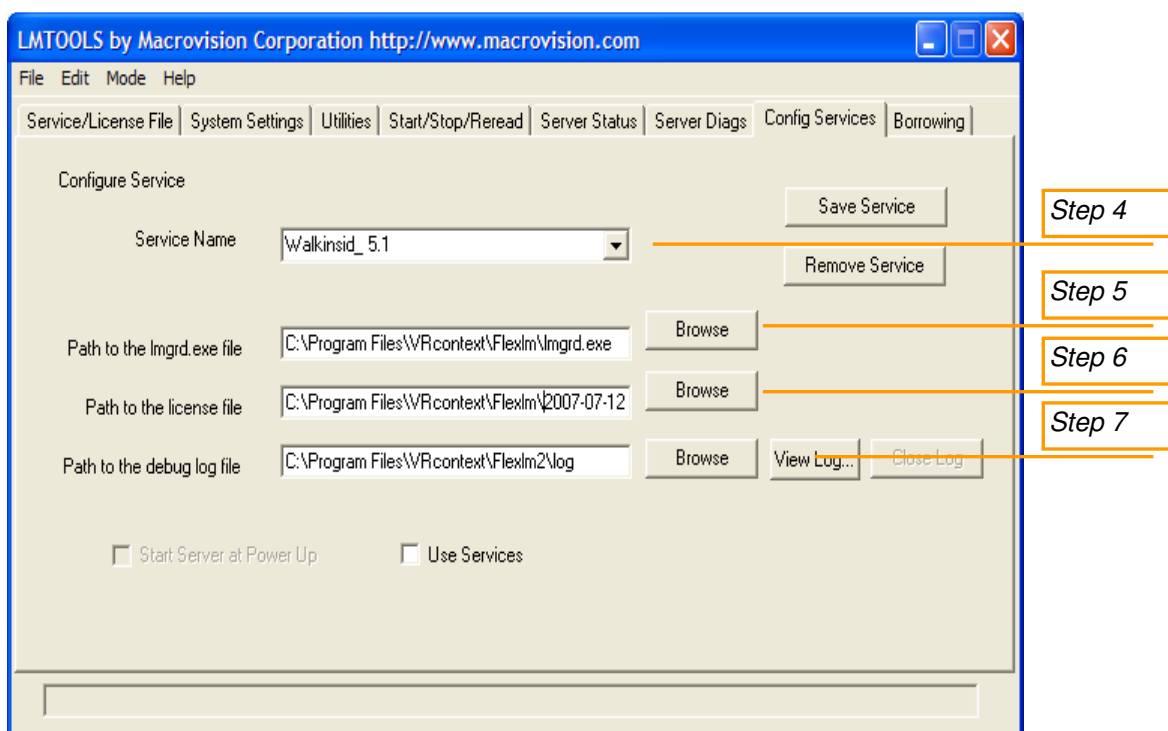
Lmtools GUI

**NOTE:** If there are more than on r services on, it's recommended to ignore file path environment variables.

The picture below will help the administrator to configure the License Server



# VRcontext

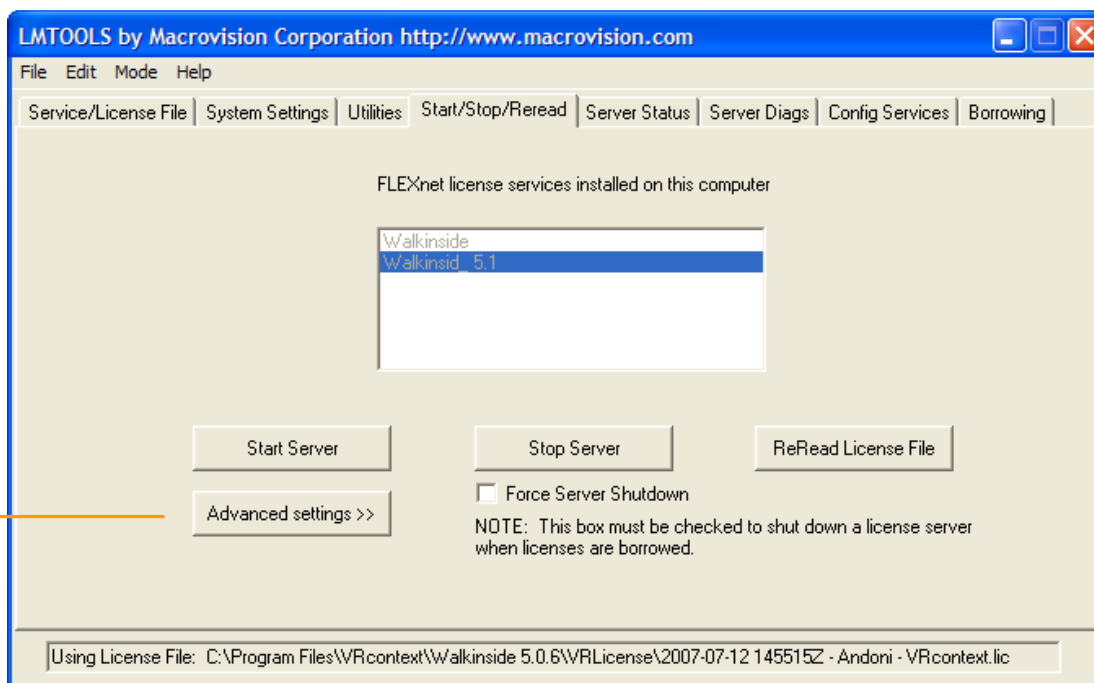


*NOTE: If the administrator selects 'Use Services' and 'Start Server at Power Up' the license server will be started automatically when you reboot the license server machine*

## 4.3. Running the License Server

**Step 1:** Select 'Start/Stop/Reread' Tab Page

**Step 2:** Select 'VRcontext' server and select 'Start Server'



## 4.4. Getting diagnostics from the License Server

There are two ways to get a diagnostic from the License Server.



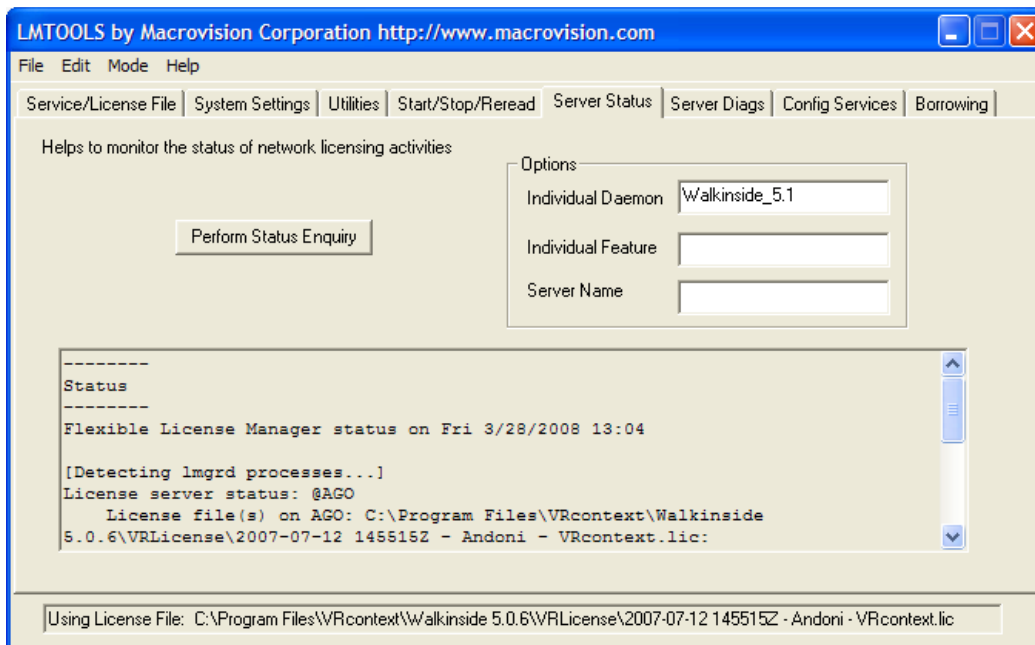
## VRcontext

One is using the Lmtools application and the other one opening the log file selected in Step 7 of the configuration.

### 4.4.1. Diagnostic from Lmtools application

Go to **Server Status** tab and click on **Perform Status Enquiry** button.

The administrator will be able to check if the service is running ok, how many licenses are available for each feature and how many of them are checked out and who checked them out.



### 4.4.2. FLEXnet log file

The administrator will be able to check if the service is running ok, which feature are available and gives the history of the usage of the license, when a feature is been checked out, when checked in and also who did it.

Example of a log file:

```
...
19:40:22 (lmgrd) Detecting other license server manager (lmgrd) processes...
19:40:22 (lmgrd) Done rereading
19:40:22 (lmgrd) FLEXnet Licensing (v10.8.0.7 build 26147) started on LatitudeC840-1 (IBM PC) (1/9/2007)
19:40:22 (lmgrd) Copyright (c) 1988-2006 Macrovision Europe Ltd. and/or Macrovision Corporation. All Rights Reserved.
19:40:22 (lmgrd) US Patents 5,390,297 and 5,671,412.
19:40:22 (lmgrd) World Wide Web: http://www.macrovision.com
19:40:22 (lmgrd) License file(s): C:\Program Files\VRcontext\Walkinside45EP\hostname.lic
19:40:22 (lmgrd) lmgrd tcp-port 27000
19:40:22 (lmgrd) Starting vendor daemons ...
19:40:22 (lmgrd) Started vrcontxt (pid 1800)
19:40:23 (vrcontxt) FLEXnet Licensing version v10.8.0.7 build 26147
19:40:23 (vrcontxt) Server started on LatitudeC840-1 for: EPViewer
19:40:23 (vrcontxt) Basic Standard Nologo
19:40:23 (lmgrd) vrcontxt using TCP-port 2283
19:40:56 (vrcontxt) TCP_NODELAY NOT enabled
19:40:56 (vrcontxt) OUT: "EPViewer" HVW@LatitudeC840-1
19:42:51 (vrcontxt) OUT: "Basic" HVW@LatitudeC840-1
19:47:26 (vrcontxt) IN: "EPViewer" HVW@LatitudeC840-1
19:47:26 (vrcontxt) IN: "Basic" HVW@LatitudeC840-1
```

NOTE 1:

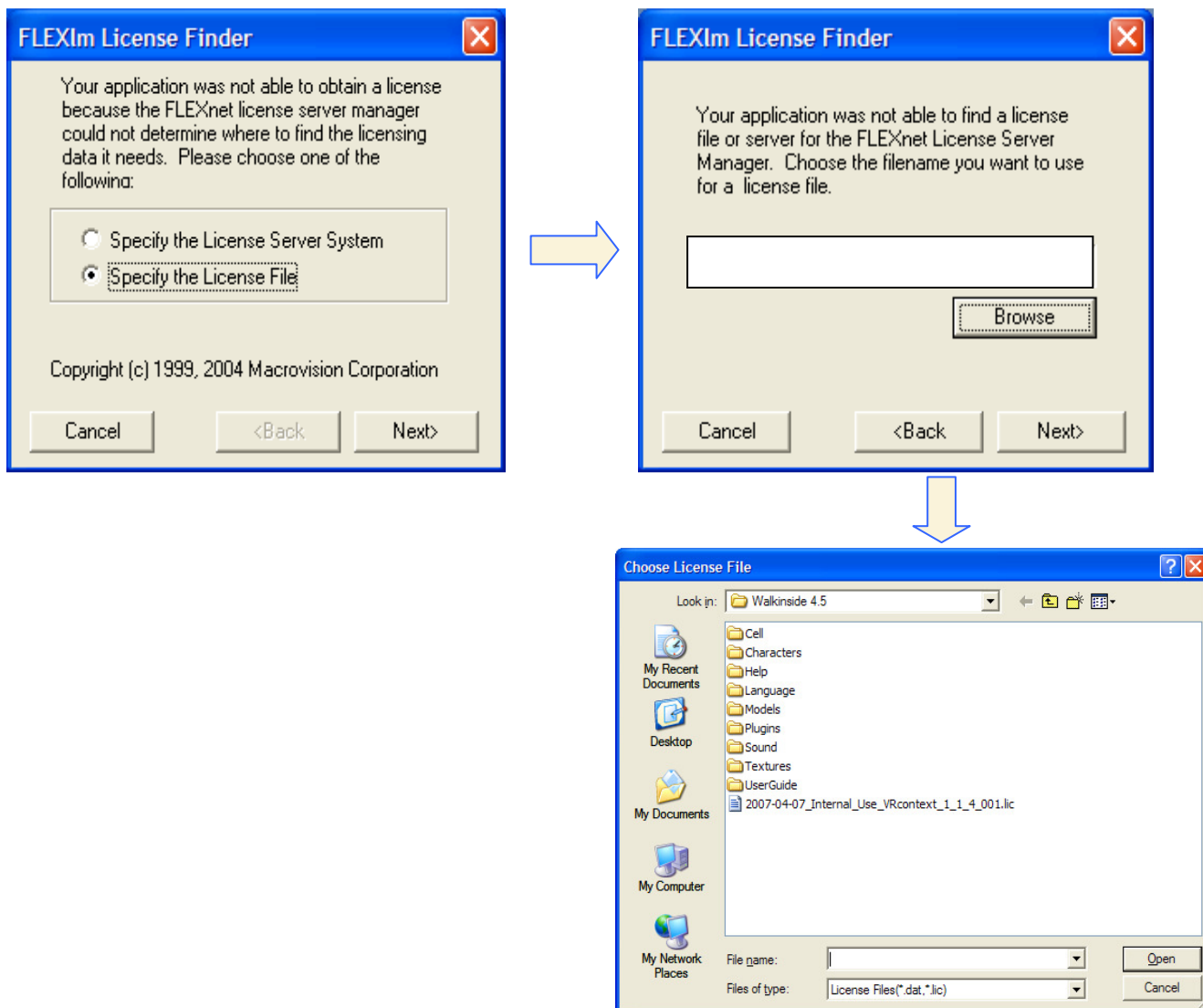


## VRcontext

The first time Walkinside is launched the user could be asked to choose a license server or a license file if he didn't place the license in the VRLicense folder. If the user has a Nodelocked license choose the license file option and browse for it.

If the user has a floating license there are two options:

1. Choose the license server option and specify its Name or IP\_address.
2. Copy the license file in the client machine as specified in point 4.1 and restart Walkinside.



### NOTE 2:

Companies using floating license where there is an internal firewall, the IT Manager should modify the floating license in order to make it work:

1. **SERVER** LatitudeC840-1 COMPOSITE=B8A302DEF943 20000
2. **VENDOR** vrcontxt path\_to\_vrcontxt\_folder/vrcontxt 20005

*The assigned ports are not mandatory to be 20000 and 20005, the IT Manager can choose the ones preferred.*



## VRcontext

In this case when Walkinside is launched for the first time:

1. Choose the license server option and specify the chosen port and its Name or IP\_address. (**20000@LatitudeC840-1**)
2. Copy the license file in the client machine as specified in point 4.1 and restart Walkinside.

