



How to retrieve your license serial number in version 4.5?

There are two ways to retrieve the license serial number:

1. The serial number in the walkinside_log.txt file

Walkinside creates a 'walkinside_log.txt' file in the Walkinside installation directory after each session.

When you open the walkinside_log.txt file you find the serial number the third line.

Example walkinside_log.txt file:

```
**** Walkinside version 4.1.6.9.29 ****  
Validating license...  
--- Serial number: 0203-5652636F6E74-80  
--- Serial number: 0203-5652636F6E74-80  
Setting up memory transfers..  
Method 0.... 17494
```

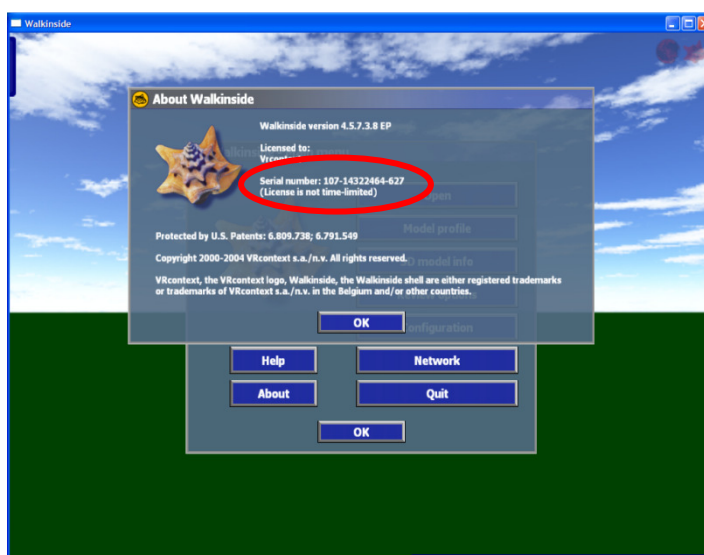
2. The serial number in the Walkinside Graphical User Interface

Step 1

Launch Walkinside.

Step 2

The Walkinside Main Menu will open up
Click on the "About" button :





VRcontext

How to retrieve your license serial number in version 5.x?

There are two ways to retrieve the license serial number:

1. The serial number in the viewer_log_2.txt file

Walkinside creates a 'walkinside_log.txt' file in the Walkinside installation directory after each session.

When you open the walkinside_log.txt file you find the serial number the third line.

Example walkinside_log.txt file:

```
...
user info: UserName, SerialNo: 48C9F8DFE2D1D264, expirationDate: 01-jun-2008
Initialize OpenGL renderer
  Vendor   : NVIDIA Corporation
  Renderer : unknown board/PCI/SSE2
  Version  : 2.0.1
...
```

2. The serial number in the Walkinside Graphical User Interface

Step 1

Launch Walkinside.

Step 2

Open the Help->About menu from the Main Menu:

