

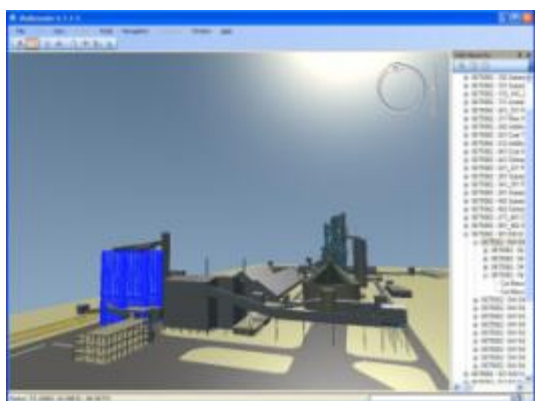


VRcontext

VRCONTEXT RELEASES CONVERTER FOR SOLIDWORKS MODELS



BRUSSELS (January 20, 2008) – VRcontext has announced the release of a converter for SolidWorks™ Version 2007 and 2008 that makes the Walkinside® visualization tool available to the SolidWorks community. This solution offers CAD users the opportunity to walk through massive SolidWorks models in real time and affords non-CAD users a way to conveniently share and review design data.



“Walkinside’s walk-through capabilities and high-speed navigation in massive models allows us to make extremely effective presentations to our customers,”

About FLSmidth

FLSmidth & Co. A/S (www.flsmidth.com) is a global organization based in Copenhagen, Denmark, and employing about 9,000 people worldwide. The company provides the cement and minerals industries worldwide with plants, machinery, services, and logistical support.

About VRcontext

VRcontext (www.vrcontext.com) is a privately owned company that develops virtual reality software applications for the oil and gas, process, energy, and homeland security markets.

said Morten Bennick, of the FLSmidth A.S. Proposal Department in Denmark. “After converting our large cement plant SolidWorks models to Walkinside, we can walk around in the virtual plant model, let our customers experience the size of the plant and equipment, and discuss the plant layout during project review sessions. We are considering expanding our utilization to take advantage of Walkinside’s unique capability to link the 3D virtual reality model to external operational databases.”



The new Walkinside Version 5 is a major rewrite of the product that delivers faster, more intuitive navigation of large assets using .NET technology, which enables remote collaboration through the Internet with online virtualization tools that are accessible even from low-end workstations. Users can contextually link external applications and databases, while they employ human-like avatars to simulate real-world constraints, such as gravity, collision, and relative dimension.



VRcontext

WALKINSIDE

VRcontext is a spin-off of Tractebel Engineering (a company of the "Groupe Suez") and was incorporated in 2000. It pioneered the industrial virtual reality technology by introducing Walkinside.



Walkinside® is a powerful software application for 3D real-time visualization and simulation to render automatically very large, complex, computer generated models. Through its user-friendly menus, maintenance and safety engineers - responsible for complex facilities - are better capable to uniquely integrate competencies, information, and applications, across all disciplines, and all business activities.

Walkinside® also delivers "Decision Support Applications" by means of "smart links" to near-static databases (production, scheduling, maintenance, document management, etc.) using the Virtual 3D Model as "intuitive" 3D Portal.

Walkinside's patented Real-Time Collision Detection and Gravity Simulation technologies allow users to immediately and intuitively explore the virtual 3D model through the eyes of a virtual human character that uniquely emulates real life experience—such as obstacle awareness, interaction with plant obstructions with ground and gravity restrictions.

The benefits of Walkinside:

Engineering Design

Walkinside® includes engineering functionalities for project Engineering and Procurement phases:

- Convert existing CAD and laser scan data to develop virtual models
- Project teams mark and comment on design and verify design integrity through virtual walk-through
- Viewpoints are exchangeable 3D snap shots of areas in the VR model
- Users can email viewpoints and otherwise exchange these files for collaboration and communication
- Queries allow users to find equipment based on database information
- Measurements include 3D distance and angle measures in the model
- Hide/show equipment to place other object in the place of the hidden equipment or to take measurement of the area
- Redline and comment on the virtual model and share information with team members

Accessibility review

Both computer and user controlled avatars can interact in the virtual model

- With patented gravity and object collision, avatars walk on surface as well as climb stairs
- Avatars are also stopped by railing or low lying piping as well as clutter on the facility
- Patented dynamic tessellation for real-time rapid rendering as users walk, run or "swim" through areas of the model

Asset management

Owners can improve asset ROI by offering operators the tools for quality decision making through intuitive analysis. Walkinside is integrated to production systems, so operators can easily access Electronic Document Management Systems (SAP, EMC/Documentum, Opidis, IBM/Maximo, etc...) and the 3D Virtual Asset using mouse options in the applications.

- Integrated databases leverage existing CAD and other engineering databases, which are linked to corresponding object in the model
- Maintenance teams can visualize outstanding and future work certificates as well as simulate complex change outs by moving plant and materials handling equipment through the model
- Managers effectively communicate status, plans and incidents using a user friendly virtual model that offers simulated recording options
- Trainees reduce learning curves through immersive and non-immersive training in a model of the actual asset