



# VRcontext

## **FLEXnet LICENSE INSTALLATION and MANAGEMENT**



## Contents

1.	License types .....	2
2.	Get the VRhostID .....	3
3.	Licenses Files .....	4
4.	Installing the License Server .....	5
5.	Management of 2 or more license files on a client machine.....	10
6.	Borrow licenses.....	11
7.	User Management .....	13



## 1. License types

VRcontext will deliver 2 different types of licenses, Nodelocked Licenses and Floating Licenses.

As shown in the picture, depending on the license type the administrator will have to take care of different aspects.

The first important new concept is the VRhostID. This is a unique identifier for the computer where the license will be running.

License type	VRhostID required	Activate License
<i>Customer Nodelocked</i>	Yes	<i>Copy in the Walkinside directory</i>
<i>Customer floating</i>	Yes	<i>Start FLEXnet License</i>

Nodelocked licenses license should be copied on the Walkinside main directory. (C:\Program Files\VRcontext\Walkinside 4.5 by default)

For the Floating Licenses, FLEXnet License Server is required to be running on a server and Walkinside on the client.



VRcontext

## 2. Get the VRhostID

To get the VRhostID of a computer the user has to follow the next steps:

- Step 1. Download [GetVRHostID.exe](#)
- Step 2. Run GetVRHostID.exe, that will create a file 'hostid.txt' in the same directory
- Step 3. Send hostid.txt to VRcontext

Hostid.txt example:

*HOSTID=COMPOSITE=***38A302DEF943** → VRhostID used to create license file  
*HOSTNAME=***LatitudeC840-1** → Computer name, used to find license server for floating licenses  
*IP\_address=192.168.123.26*



VRcontext

### 3. Licenses Files

The Nodelocked license file will look like:

```
FEATURE EP vrcontxt 1.0 permanent uncounted VENDOR_STRING=VRcontext HOSTID=COMPOSITE=909465A785C \  
user_info=PCAndoni SN=106-21302663-693 SIGN="01DC 6721 389F 53E5 BCE8 56C7 ED95 B6A6 010E 21D0 7901 FFC4 \  
BD0A 3830 F8A9 EC9A 349F B4E2 232E 3948 C12A"  
FEATURE Standard vrcontxt 1.0 permanent uncounted VENDOR_STRING=VRcontext HOSTID=COMPOSITE=909465A785C \  
user_info=PCAndoni SN=106-21302663-693 SIGN="0216 AB15 AFD2 3526 60B9 75CD 586E 3A22 6F8D C6A5 2700 CFFB \  
DD7D C53C E6D8 11EA B906 C8E8 128F 52D7 2526"  
FEATURE Nologo vrcontxt 1.0 permanent uncounted VENDOR_STRING=VRcontext HOSTID=COMPOSITE=909465A785C \  
user_info=PCAndoni SN=106-21302663-693 SIGN="029E C6A7 20D3 1996 E291 1390 6B6C 96ED FD04 26B1 7703 7050 \7EB1  
F770 A16D 76D6 91D2 4EE1 9239 F699 9F31"
```

The Floating license file will look like:

```
SERVER LatitudeC840-1 COMPOSITE=B8A302DEF943 ANY  
VENDOR vrcontxt  
FEATURE EPViewer vrcontxt 1.0 permanent 2 VENDOR_STRING=VRcontext user_info=hostname SN=107-10192353\  
SIGN="035D 3512 F0AB 0037 9B55 2C5B 357A B821 A7EB F90C A302 9468 73F2 3535 A8F4 A7A8 AA8D \  
ADD3 8C2D 3494 F199"  
FEATURE Basic vrcontxt 1.0 permanent 1 VENDOR_STRING=VRcontext user_info=hostname SN=107-10192353-737 \  
SIGN="0136 E8EB A314 05C5 F485 F69D 074F F115 8ED9 1722 6C00 2FF3 F803 58DD C576 FC44 7E6D C7E0 0333 \  
9DFE DE8E"  
FEATURE Standard vrcontxt 1.0 permanent 1 VENDOR_STRING=VRcontext user_info=hostname SN=107-10192353-7\  
SIGN="00DD AAD4 B9EA A57F 0F72 BC3F 7131 DE88 ACA8 41EF 3D00 C239 DCA9 C9FE ECB1 33A5 7973 \  
39EB CB1D 68D7 0F11"  
FEATURE Nologo vrcontxt 1.0 permanent 2 VENDOR_STRING=VRcontext user_info=hostname SN=107-10192353-737\  
SIGN="0122 5B33 055B F4EA 9804 A3D2 B9BB 5178 32BE B7D0 A503 A6A4 86BF 77A3 820C 2267 F97E 930D 791D \  
E567 BB69"
```

*NOTE: The user can change two fields in the FLEXnet Floating license file:  
The hostname and port number (indicated in blue)*



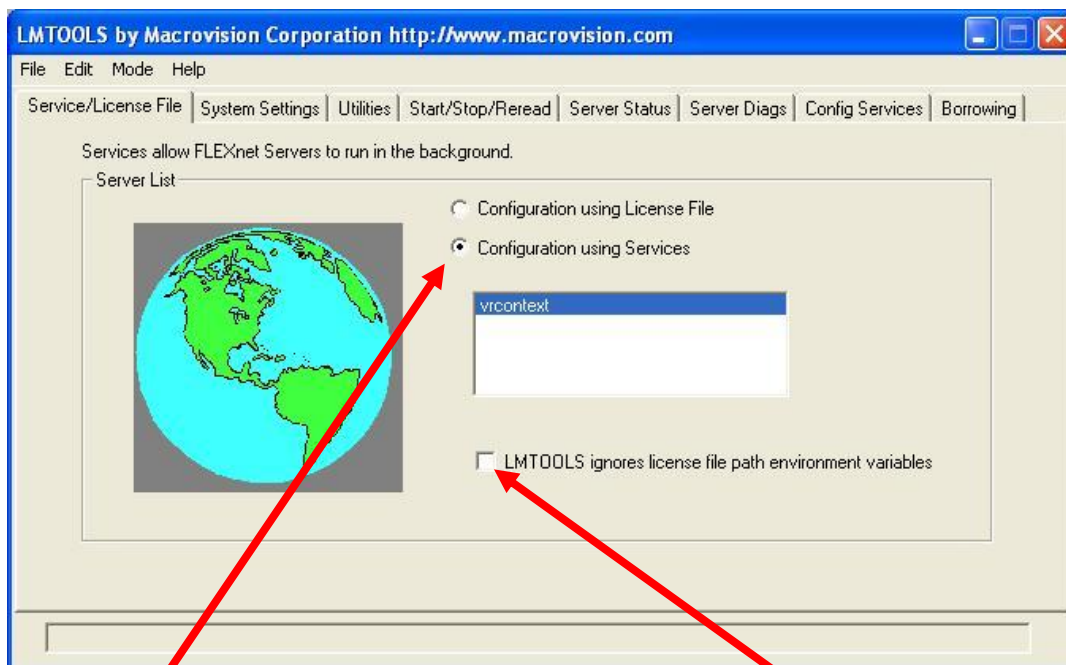
## 4. Installing the License Server

To install the license server follow the next steps:

- Step 1. Install FLEXnet during Walkinside installation procedure: This creates a directory 'Flexlm'
- Step 2. Launch the FLEXnet license server
- Step 3. Copy FLEXnet license in Walkinside\VRLicense installation folder on client machines.

### 4.1- License Server Configuration

- Step 1. Run C:\Program Files\VRcontext\Flexlm\lmtools.exe



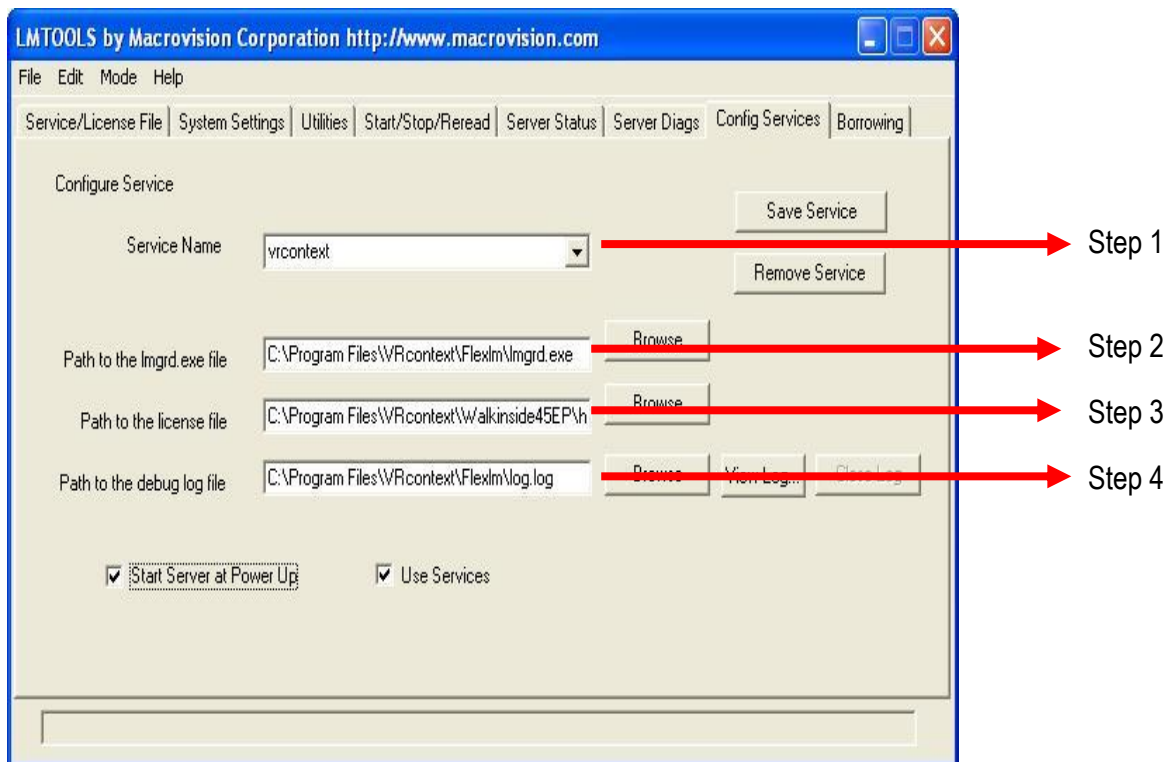
*Lmtools GUI*

- Step 2. Select 'Configuration using Services'
  - In case of more than one service is used, check on the checkbox.
- Step 3. Select 'Config Services' Tab page
- Step 4. Enter service name e.g. 'VRcontext'
- Step 5. Select lmgrd.exe
- Step 6. Select license file
- Step 7. Select log file
- Step 8. Save Service



# VRcontext

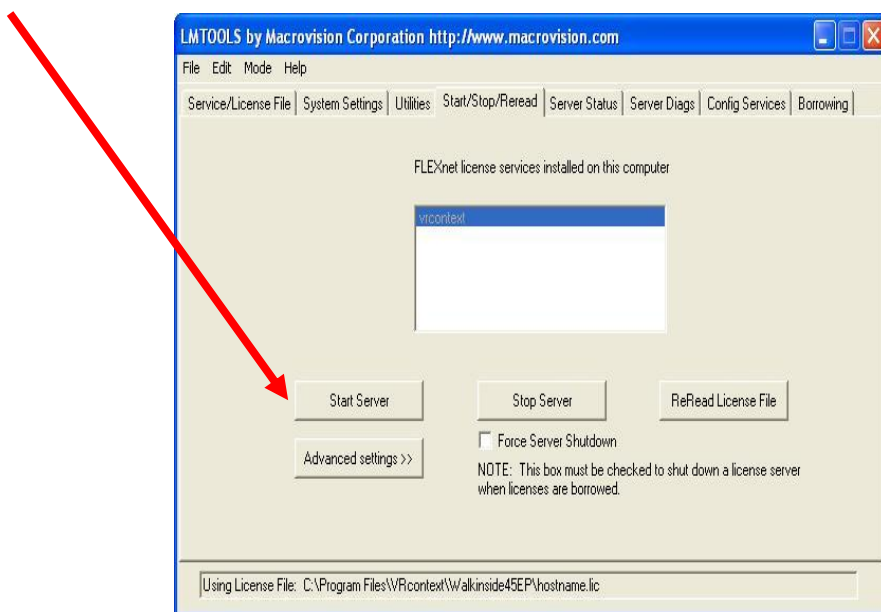
The picture below will help the administrator to configure the License Server.



*NOTE: If the administrator selects 'Use Services' and 'Start Server at Power Up' the license server will be started automatically when you reboot the license server machine.*

## 4.2- Running the License Server

- Step 1. Select 'Start/Stop/Reread' Tab Page
- Step 2. Select 'VRcontext' server and select 'Start Server'





## VRcontext

### 4.3- Getting diagnostics from the License Server

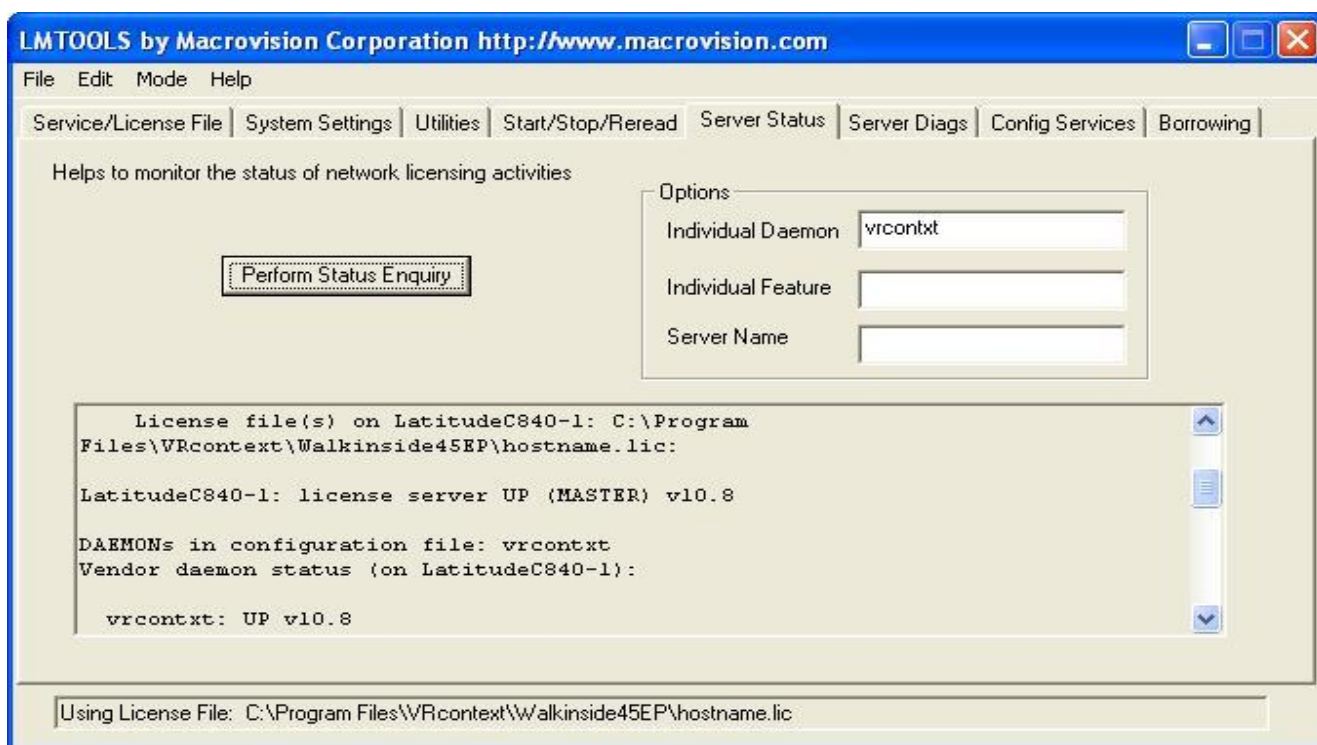
There are two ways to get a diagnostic from the License Server.

One is using the Lmtools application and the other one opening the log file selected in Step 7 of the configuration.

#### 4.3.1- Diagnostic from Lmtools application

Go to **Server Status** tab and click on **Perform Status Enquiry** button.

The administrator will be able to check if the service is running ok, how many licenses are available for each feature and how many of them are checked out and who checked them out.



#### 4.3.2. FLEXnet log file

The administrator will be able to check if the service is running ok, which feature are available and gives the history of the usage of the license, when a feature is been checked out, when checked in and also who did it.

Example of a log file:

```
...
19:40:22 (Imgird) Detecting other license server manager (Imgird) processes...
19:40:22 (Imgird) Done rereading
19:40:22 (Imgird) FLEXnet Licensing (v10.8.0.7 build 26147) started on LatitudeC840-1 (IBM PC) (1/9/2007)
19:40:22 (Imgird) Copyright (c) 1988-2006 Macrovision Europe Ltd. and/or Macrovision Corporation. All Rights Reserved.
19:40:22 (Imgird) US Patents 5,390,297 and 5,671,412.
19:40:22 (Imgird) World Wide Web: http://www.macrovision.com
```



# VRcontext

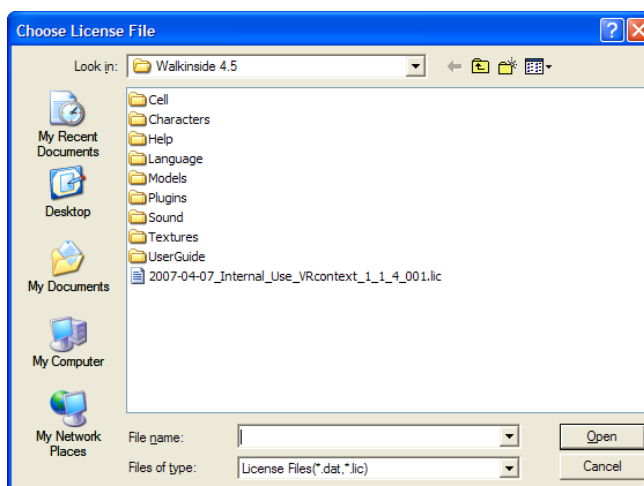
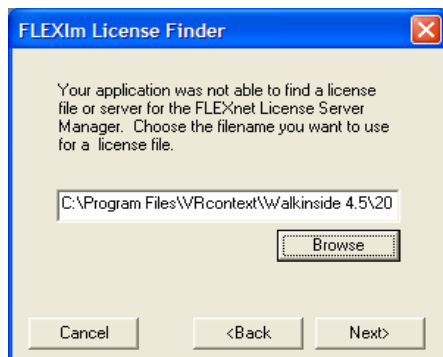
```
19:40:22 (Imgrd) License file(s): C:\Program Files\VRcontext\Walkinside45EP\hostname.lic
19:40:22 (Imgrd) Imgrd tcp-port 27000
19:40:22 (Imgrd) Starting vendor daemons ...
19:40:22 (Imgrd) Started vrcontxt (pid 1800)
19:40:23 (vrcontxt) FLEXnet Licensing version v10.8.0.7 build 26147
19:40:23 (vrcontxt) Server started on LatitudeC840-1 for: EPViewer
19:40:23 (vrcontxt) Basic          Standard          Nologo
19:40:23 (Imgrd) vrcontxt using TCP-port 2283
19:40:56 (vrcontxt) TCP_NODELAY NOT enabled
19:40:56 (vrcontxt) OUT: "EPViewer" HVW@LatitudeC840-1
19:42:51 (vrcontxt) OUT: "Basic" HVW@LatitudeC840-1
19:47:26 (vrcontxt) IN: "EPViewer" HVW@LatitudeC840-1
19:47:26 (vrcontxt) IN: "Basic" HVW@LatitudeC840-1
```

## NOTE 1:

The first time Walkinside is launched the user could be asked to choose a license server or a license file, if the user has a Nodelocked license choose the license file option and browse for it.

If the user has a floating license there are two options:

- 1- Choose the license server option and specify its Name or IP\_address.
- 2- Copy the license file in the client and choose the license file option and browse for it.





# VRcontext

## NOTE 2:

Companies using floating licenses where there is an internal firewall, the IT Manager should modify the floating license in order to make it work:

**SERVER LatitudeC840-1 COMPOSITE=B8A302DEF943 20000**  
**VENDOR vrcontxt path\_to\_vrcontxt\_folder/vrcontxt 20005**

*The assigned ports are not mandatory to be 20000 and 20005, the IT Manager can choose the ones preferred. The chosen ports need to be opened by the IT Manager.*

In this case when Walkinside is launched for the first time:

- 1- Choose the license server option and specify the chosen port and its Name or IP\_address. (**20000@ LatitudeC840-1**)
- 2- Copy the license file in the client and choose the license file option and browse for it.



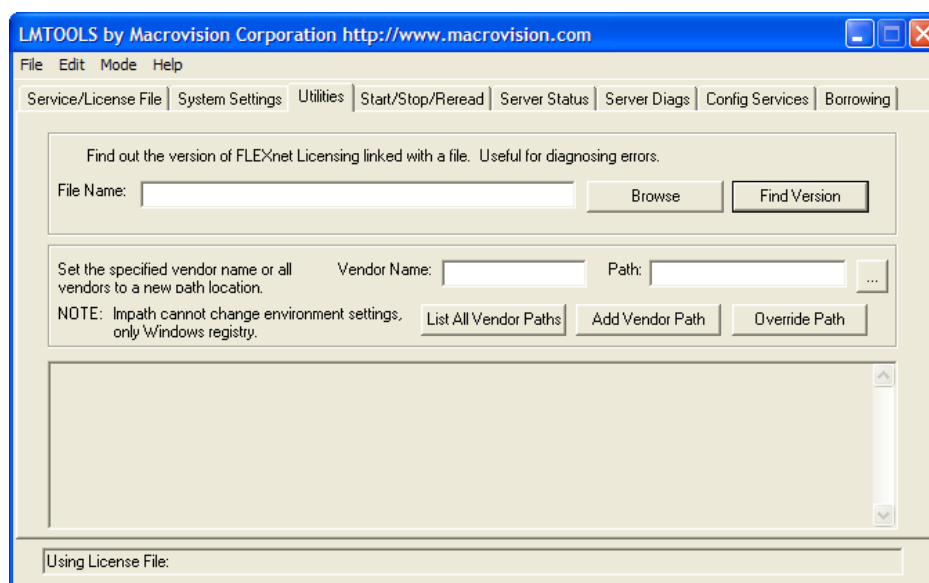


## 5. Management of 2 or more license files on a client machine

It could happen that in a company using several floating licenses for the Standard Viewer, there are some client machines where the company would like to keep a PreView license and also be able to run the floating Standard Viewer license when special feature is needed.

The next steps must be followed in the client machine:

- Create a new folder where the floating license file will be stored. (i.e. Walkinside\VRLicense\ServerLicense)
- Copy the floating license file into this folder.
- Copy the PreView license in the Walkinside\VRLicense file.
- Open lmttools.exe located in Walkinside\VRlicense folder.  
Go to the utilities tab.



- Write "vrcontxt" on "Vendor Name" (make sure to write vrcontxt and not vrcontext)
- Browse for the license that is needed in the "Path" field.
- Click on override Path.

The user must follow these steps every time he wants to use a different license than the last time he used Walkinside.



## 6. Borrow licenses

### Borrowing a license from the License Server through the command line

When the user needs to borrow a license from the License Server, he/she should follow the next steps from the CLIENT machine:

- 1- Download the borrowing kit from the:

[http://www.vrcontext.com/download/tools/license\\_borrowing\\_kit.zip](http://www.vrcontext.com/download/tools/license_borrowing_kit.zip)

and unzip it into the Vrcontext folder.

- 2- Run the command in the CLIENT machine:

```
Imborrow {vendor | all} enddate [time]
```

An example of this command:

```
Imborrow vrcontxt 24-apr-2008 12:00
```

This will borrow all the features that the machine is using until the 24 of April of 2007 at 12:00 related to Walkinside.

For example:

A screenshot of a Windows command prompt window. The title bar reads 'C:\WINDOWS\system32\cmd.exe'. The command prompt shows the following sequence of commands and output:

```
C:\Program Files\VRcontext>cd Flexlm
C:\Program Files\VRcontext\Flexlm>Imborrow vrcontxt 24-apr-2008
```

- 3- Start Walkinside from the CLIENT machine that will borrow the license and open a model. This will checkout all the needed features.
- 4- Disconnect from the NET and stop Walkinside.



Borrowing a license from the License Server through the LMTTOOLS application

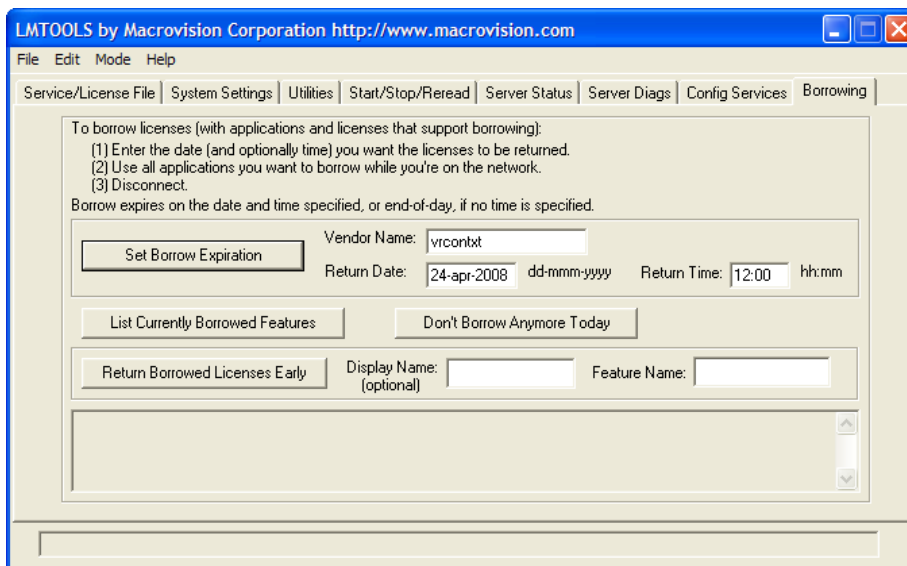
When the user needs to borrow a license from the License Server, he/she should follow the next steps from the CLIENT machine:

- 1- Download the borrowing kit from the:

[http://www.vrcontext.com/download/tools/license\\_borrowing\\_kit.zip](http://www.vrcontext.com/download/tools/license_borrowing_kit.zip)

and unzip it into the Vrcontext folder.

- 2- Open the lmttools.exe in the CLIENT machine and go to the BORROWING tab.



- 3- Select Vendor name "vrcontxt".
- 4- Add the return date and Time.
- 5- Click Set Borrow Expiration.
- 6- Start Walkinside from the CLIENT machine that will borrow the license and open a model. This will checkout all the needed features.
- 7- Disconnect the machine from the network and stop Walkinside.

**NOTE:** The licenses are borrowed by the user not the machine, meaning the user will need to log in to the PC with the same login and password as when the licenses were borrowed.



## 7. User Management

When using a floating license the License Manager can control the access of users by using a simple options file in the License Server Machine.

To create the option file follow the next steps:

1. Create a text file.
2. Save it as vrcontxt.opt in the same folder where the vrcontxt.exe is stored.

Once the option file is created the License manger needs to edit it with the needed information. There many keywords that can be used in the option file.

<b>EXCLUDE</b>	Deny a user access to a feature
<b>EXCLUDEALL</b>	Deny a user access to <i>all</i> features served by this vendor daemon
<b>GROUP</b>	Define a group of users for use with any options
<b>GROUPCASEINSENSITIVE</b>	Sets case sensitivity for user and host lists specified in GROUP and HOST_GROUP keywords
<b>HOST_GROUP</b>	Define a group of hosts for use with any options
<b>INCLUDE</b>	Allow a user to use a feature
<b>INCLUDEALL</b>	Allow a user to use <i>all</i> features served by this vendor daemon.
<b>RESERVE</b>	Reserve licenses for a user or group of users/hosts.

The next example saw how to limit user the access to an specific feature:

```
GROUP GROUP_NAME1 USER_NAME2 USER_NAME3  
EXCLUDE COREBUILDERFLOATING USER USER_NAME1  
EXCLUDE PDSBUILDERFLOATING USER USER_NAME1  
EXCLUDE PDMSBUILDERFLOATING USER USER_NAME1  
EXCLUDEALL GROUP GROUP_NAME1
```

*USER\_NAME1* will not have access to any of the *COREBUILDERFLOATING*, *PDSBUILDERFLOATING*, *PDMSBUILDERFLOATING*, modules.

*USER\_NAME2* and *USER\_NAME3* won't have access to any feature of the license.

Finally the license file must be modified in order to read the option file:



VRcontext

1. Open the floating license in the License Manager PC
2. Modify the vendor line to look like:
  - a. `VENDOR vrcontxt options="mypath\vrcontxt.opt"`
3. Save the license.
4. Restart the server or Reread the license file using lmttools.

*For more information about the Option file, please refer to the [LicensingEndUserGuide.pdf](#), chapter 5.*