



VRcontext

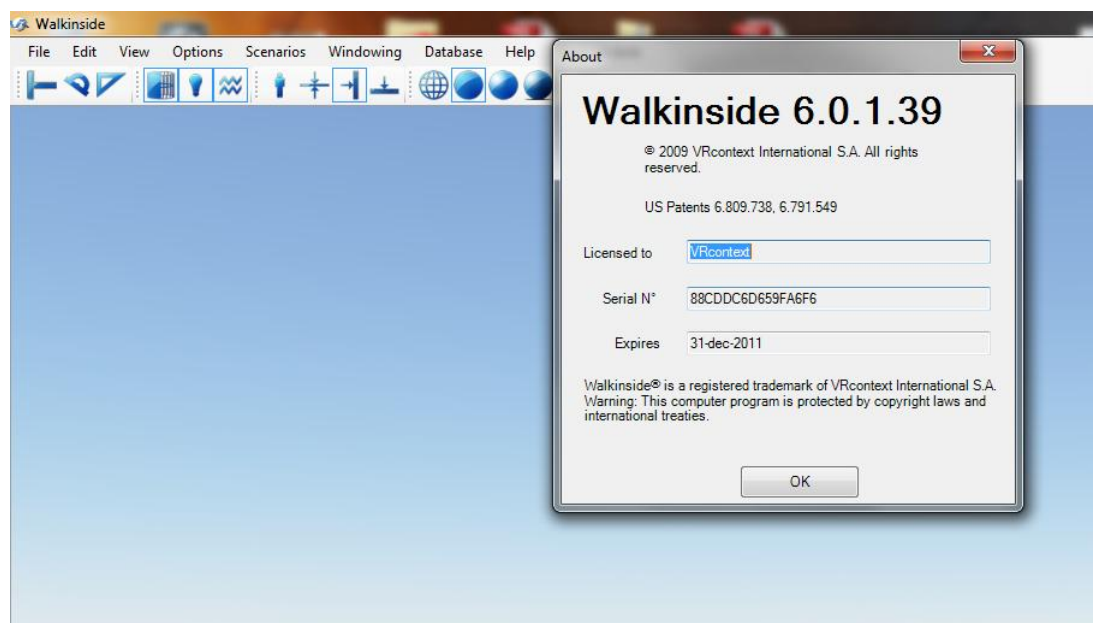
## How to retrieve your license serial number in version 6.x?

### Step 1

Launch Walkinside.

### Step 2

Open the Help->About menu from the Main Menu:





## How to retrieve your license serial number in version 5.x?

There are two ways to retrieve the license serial number:

### 1. The serial number in the viewer\_log\_2.txt file

Walkinside creates a 'walkinside\_log.txt' file in the Walkinside installation directory after each session.

When you open the walkinside\_log.txt file you find the serial number the third line.

Example walkinside\_log.txt file:

```
...
user info: UserName, SerialNo: 48C9F8DFE2D1D264, expirationDate: 01-jun-2008
Initialize OpenGL renderer
  Vendor   : NVIDIA Corporation
  Renderer : unknown board/PCI/SSE2
  Version  : 2.0.1
...
```

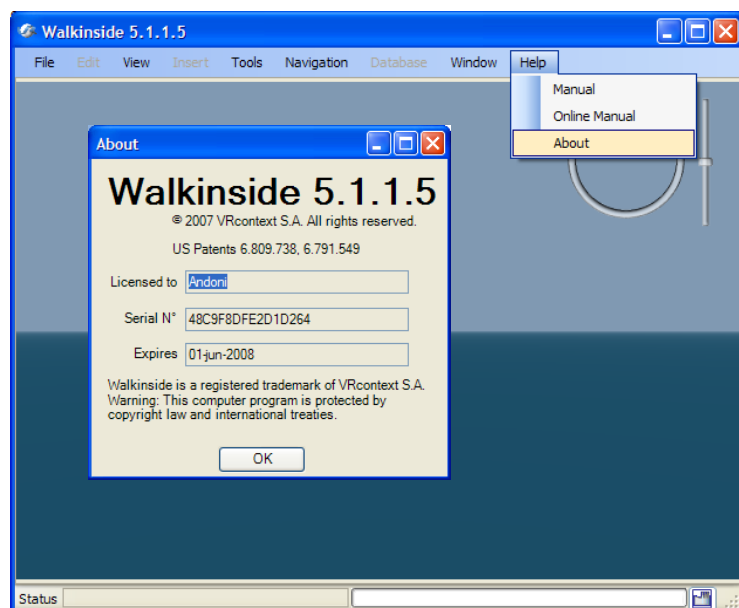
### 2. The serial number in the Walkinside Graphical User Interface

#### Step 1

Launch Walkinside.

#### Step 2

Open the Help->About menu from the Main Menu:





## How to retrieve your license serial number in version 4.5?

There are two ways to retrieve the license serial number:

### 1. The serial number in the walkinside\_log.txt file

Walkinside creates a 'walkinside\_log.txt' file in the Walkinside installation directory after each session.

When you open the walkinside\_log.txt file you find the serial number the third line.

Example walkinside\_log.txt file:

```
**** Walkinside version 4.1.6.9.29 ****
Validating license...
--- Serial number: 0203-5652636F6E74-80
--- Serial number: 0203-5652636F6E74-80
Setting up memory transfers..
Method 0.... 17494
```

### 2. The serial number in the Walkinside Graphical User Interface

#### Step 1

Launch Walkinside.

#### Step 2

The Walkinside Main Menu will open up.

Click on the "About" button:

